



A special time, when spirits
are lighter,
The world so much brighter,
Love is deeper, feelings stronger,
May its presence last the year
and longer.

The Presence of Christmas

December 23, 1990

McCulloch's

Easy Elegance

2A. Leopards a-prancing on a sweeping caftan of printed triacetate jersey. Butterfield 8 details it with a trapunto stitched midriff and sleeve edging. Red or Black. One size fits all. 23.00.

2B. Vivid Indian embroidery brightens a zip-front hostess robe of lush Arnel® triacetate and nylon fleece. From Lisanne, Inc. in Brown or Navy. Sizes P, S, M, L. 32.00.



Romantic Pairs

Oriental printed exotica from RE7 in travel happy polyester knit. Color as shown. Sizes P, S, M, L.

3A. Button-front shirt robe with side slash pockets. 25.00.

3B. Spaghetti strapped gown to match is scalloped at bust and hemline. 15.00.

Exquisitely colored duet of DuPont Antron III® nylon crepe. Styled by Lisette for the lady in you. Sizes S, M, L.

3C. Fitted wrap robe ties to the side. In Geranium, Jade Stone or Flag Blue. 13.00.

3D. Gown with shaped lace bodice. Coral, Jade or Blue. 9.00.





4A



4B

4A. The stretch terry smock is what's new for home or resorting. In absorbent cotton and polyester with zip-up front, shirred all-around yoke, deep twin pockets and push-up sleeves. A Herbcraft creation in Yellow or Green. Sizes P, S, M, L. 24.00.

4B. Such a pretty way to be comfortable, in our multi Schiffli embroidered zip-front robe of cozy Arnel® triacetate fleece. A Dela Ann design by Hage & Azrak. Aqua or Pink. Sizes 10 to 18. 25.00.

4C. This robe wraps up all the glamour in Borgio® 100% Wear-Dated® Monsanto Acrilan® acrylic, high pile, exclusive with RHAPSODY. Warranted for one full year's normal wear, refund or replacement when returned with tag and sales slip to Monsanto. Fully lined in silky tricot, so well styled. Scarlet Red or Creme White. Sizes P, S, M, L. 41.00.



4C

For Evening Lounging

5A. The Bathket of Luxuries makes bathing a pleasure. Holds 4 assorted fragrances of luxury soap, 8 English bath cubes and a 6 oz. Bath Oil Crystals. All in a clear rope handled container. By Ben Rickert. 6.00 set.

5B. Criss-cross sandal with sling back for at-home and on-the-town. In glimmery Mylar on a comfortable plaza heel. By Bertlyn. Gold or Silver. Sizes S, M, ML, L, XL. 8.00.



5A



5B



5C

5D

5C. Easygoing zip-front robe with patch pockets for household pick-ups and a shaped collar. I. Appel® tailors it with released tucking flowing from a front yoke. DuPont Dacron® polyester fleece in Green or Terra Cotta. Sizes P, S, M, L. 26.00.

5D. Soft falling caftan alight with lurex braid trim. Smart Time does it up in fleece of Celanese® Arnel® triacetate and nylon. With a back zipper. Red or Royal. Sizes P, S, M, L. 29.00.

For Wintry Nights

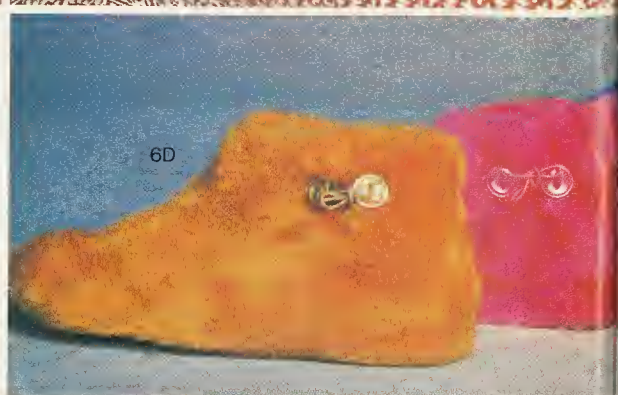
6A. Quaint granny gown sugared with delectable lace, with button back. A brushed delight by Suzy Star. Beige, Pink or Blue. Sizes 7 to 13. 13.00.

6B. The T shirt goes long in ombred heather-striped polyester and cotton knit. Scoop neck puts it in the show-off class. Color as shown. Sizes 7 to 13. By Tommies. 17.00.

6C. Zip around in our jogger one-piecer with separate footies for super cold times. Monique makes it for the good sports in Monsanto Acrilan[®] acrylic with that zip-up front and ribbed white accents. Pink, Blue, Yellow or Red. Sizes S, M, L, XL. 17.00.



6D. The "Hi-Stepper" bootie is a cosy one in machine washable thick Orlon[®] acrylic with springy foam lining. By Dearfoam. Gold, Cerise or White. Sizes S, M, L, XL. 5.00.



Sleeping Light

7A. Cap-sleeved beauty of lustrous DuPont Antron III[®] nylon satin. With a sexy lace-trimmed wide V-neckline and a nice flow about it. By Valmode. Blue or Ivory. Sizes S, M, L. 14.00.

7B. Barely there gown of nylon tricot has a deeply shirred front and back yoke and a drifty dreamy feeling. By Snowdon. Aqua, Bone, Red, Pink or Black. Sizes S, M, L. 9.00.

7C. Tri-color scuff is triply terrific in Hi-Lite pile with a durable sole. By R.G. Barry in Beige, Blue, Gold or Pink comb. Sizes S, M, L, XL. 4.00.

7D. Loving hands created this hand crocheted acrylic slipper with hand embroidered peasant trim. By Ben Berger. Red, Shetland Blue, Dusty Pink. One size fits all. 5.00.

Sharon V. Fair

80147

80-760

80-159



Comfy and Cosy

8A. Conserve on energy in our warm ecology printed gown with lace trim accents. By Debutante in brushed Blue, Pink or Maize comb. Sizes S, M, L. 11.00.

8B. Victorian charmer with eyelet everywhere and a daintily embroidered yoke. A brushed treasure from Mamary. Pink, Blue or Maize. Sizes S, M, L. 11.00.

8C. Ole for our shirty gown with Mexicana embroidery to enliven things and contrasting ecru lace. By Lady Weldon in brushed nylon. Fabric by Guilford Mills. Sea Foam, Peach or Ivory. Sizes S, M, L. 12.00.

8D. Gift-boxed trio of bikinis by E. Greenwald. With Lycra® Spandex waist and leg and a comfortable cotton lined crotch. White, Beige and Blue. Sizes 5, 6, 7. 5.00 set.

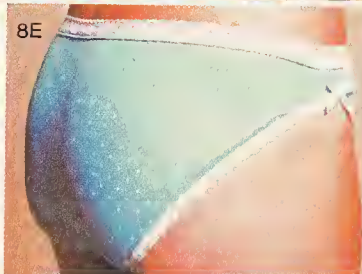


The basic bikinis by Amber. Sizes 5, 6, 7. Just 1.35 each.

8E. With stretch lace waist and leg band. Bowed at the criss-cross sides. Nylon duco dot in all the fashion colors.

8F. With contrasting elastic waist and leg bands and a ring on both sides. Nylon in assorted solids and prints.

8G. Striped smartie in preshrunk combed cotton. Assorted colors.



Headed for Pleasure

9A. Glamour is a cape-covered slink of sleeveless V-neck polyester. Samax sets it a-sparkle with a rhinestone clip at the bodice; and covers with slink with a cape of sheer polyester. Blazing Pink or Blazing Green. Sizes 12 to 20. 36.00.

9B. Sweater-y evening dress of double knit polyester. With a white-iced prettily collared bodice and a jacquard ribbed skirt. By Connections. Aqua or Peach. Sizes 8 to 16. 36.00.



9C. Pastel plaided pant suit in travel-right ENCRON® polyester is by Marty Gutmacher. Shirt-jac has 3 patch pockets, yoke detail and a vented back. With it are pull-on pants and a short sleeved rib-knit turtleneck. Blue or Coral. Sizes 10 to 18. 34.00.

9D. The 3-part weekender takes you away in style. With a single breasted, wide laped jacket, easy pull-on pant and an A-line skirt. By Nan Scott in polyester and linen. Daffodil or Apricot. Sizes 10 to 20. 54.00.

ENCRON® is a registered trade mark for American Enka polyester fiber.

Bejewel Her

Regal snake chains with swirl stations of polished metal. To wrap alone or in pairs for sensational results. By Capri in Gold or Silver tone.

10A. 30" length. 10.00. **10B.** 15" length. 6.00.

10C. Wedding band earrings to match. 5.00 pr.

Elegant jewelry set with your choice of genuine Jade, Opal or Smokey Topaz. Each boxed in plush velvet. By Expansion. 6.00 ea.

10D. Beautifully wrought pendant on a gold-filled chain. **10E.** Splendid ring.

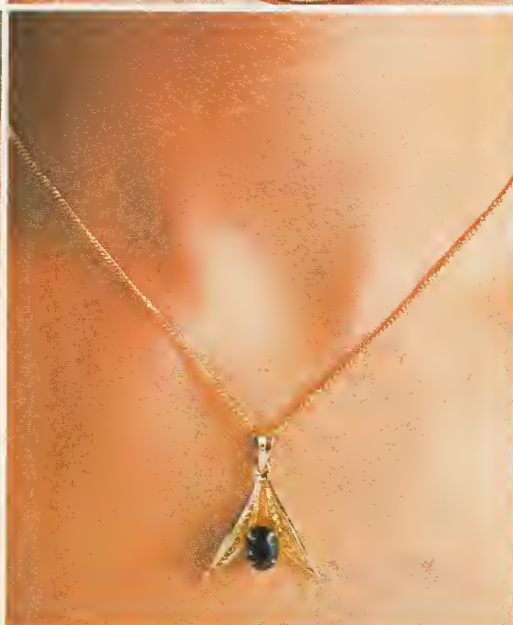
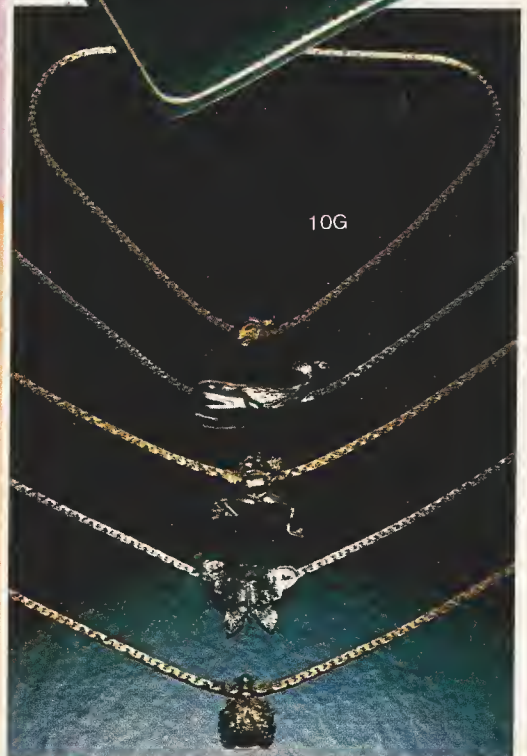
10F. Pierced earrings.

10G. Discreet neck chains with the look of the "real thing." To wear singly or with other favorites.

Hattie Carnegie styles them in a 15" length with moveable motifs. Gold or Silvertone. 5.00 ea. Please specify your choice of: Lover's Knot; Whale; Frog; Butterfly; Ladybug.

10H. Elegant fluid look of chains with diamond cut locket. 3 asst. styles. Gold or Silver tone. 7.00 ea.

10J. Wise choice for a clever lady, the wise owl pendant with glass eyes and movable head and tail. Perched on a 24" rope chain. By Tancer & Two. Gold or Silver. 8.00.



10H

10D

10J

Bagging the Best

11A. Neat satchel on a pewter frame has a snap-closed outer pocket and inner zipper. A collector's item, in genuine leather. Black, Rust or Tan. 28.00.

11B. The "Organized" handbag sees to everything with 9 compartments, large removable change purse and a deep back pocket. Kadin styles it with a short shoulder strap, trapunto flap and turn lock. Kayskin vinyl in Black or Otter. Sombrero vinyl in Brazilian Tan. 23.00.

11C. That multi-colored chevron design makes the difference in our handsome zip-top swagger bag. With double handles and outside pockets. By Burlington. Mahogany, Russet or Black comb. 38.00.



11A



11B



11C



11D

11D. Squashy hobo holds all thanks to triple compartments and an inside zipper. By Mr. Ernest Black, Camel or Brick 25.00.

11E. Gilt-handled swagger bag with detachable shoulder straps. With a zipper top, outside pocket and a safe tab closing. By Dover Handbag. Urethane in Sierra Tan, Black, Brown, Camel, or Clay 11.00.



11E



12A



12B



12D



12C

12A. Stunning "Schiaparelli signature" silk blend scarves in colorful designer prints. 30" square. By Glentex and they're gorgeous. 9.00 ea.

12B. Warm her heart and other places, too, with our acrylic knit 3-piece set from Ben Berger. Trios a beret, 6-foot scarf with hand-tied fringe and gloves. Camel, Rust, Green, Red, Navy, Brown or Natural. One size fits all. 10.00 set.

12C. Wrap up your beauty in hand painted polyester chiffon oblong scarf that floats on air. It's 14 x 45" long. From Sally Gee. In assorted floral patterns on White. 5.00 ea.

12D. Gracefully swirled "Feather Printed" scarves of easy care polyester twill. 28" sq. Imported by Baar & Beard in your choice of three elegant patterns. 5.00 ea.

12E. "British Sterling" is the best kind of exchange. Here in a Leatherette-cased travel set that holds 2 oz. each of After Shave, Cologne and Spray Deodorant. For the fastidious man from Speidel. 8.50 set.

12F. Jovan Musk Oil Gift Set for that sultry sensation. Contains 1/3 oz. Musk Oil perfume and 2 oz. Musk Oil cologne. Boxed for giving. 8.50 set.

12G. The "Totes" you see on tv. Wonderful rain repellent rain scarves of machine washable drip dry polyester. Yours in solid colors with contrast trim or in hand silk screened prints. Choose mostly Navy, Red, Green, Brown, Maroon, Black, Grey, Orange or Beige. 8.95 ea.



12E



12F



12G



A1



A2

A4

A3



A5



A6

Home for the Holidays

"Mariposa," our smart butterfly designed luxurious rug for bed or bath. By Lysander in 100% nylon with a non-skid back. Forsythia, Robin Blue, Willow Green, Champagne or Peach.

A1. Size 21 x 34. 10.00. Not shown—**A1a.** Size 24 x 40. 14.00. **A1b.** 24" round. 10.00. **A1c.** Lid cover. 4.00.

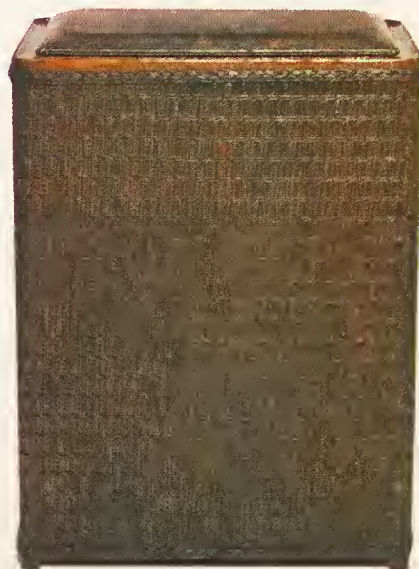
Embroidered towels for that charming touch. "Wildflower", a stunning sheared ensemble. By J. Abouchar. Yellow, Pink or Blue. **A2.** Hand size. 3.00 ea. **A3.** Bath size. 5.50 ea.

A4. Fingertip size. 2.00. ea. **A4a.** Not shown—Washcloth. 1.80 ea.

A5. Beautiful bathrooms begin with this 5-piece set in plushly carved DuPont Nylon. Included are: a tank cover, tank top, lid cover, 18" x 30" bath rug and an 18" x 22" contour rug. Boxed to give from Hampton Mills. Yellow, Pink, Willow Green, Gold, Sable and Peach. 13.00 set.

"Town and Country" wicker accessories by Pearl-Wick adds a fine furniture look to the bathroom. A skillful blend of fashionable wicker with a wooden-like top frame, a departure from the ordinary. Walnut or White.

A6. Two tier shelf. 17.00. **A7.** Hamper. 24.00.



A7

B1. Our Concord Hurricane Candle Holder with an antique charm comes complete with a votive candle. Pewter-finished with amber glass. 11 1/2" high. 9.50. By Sutton.

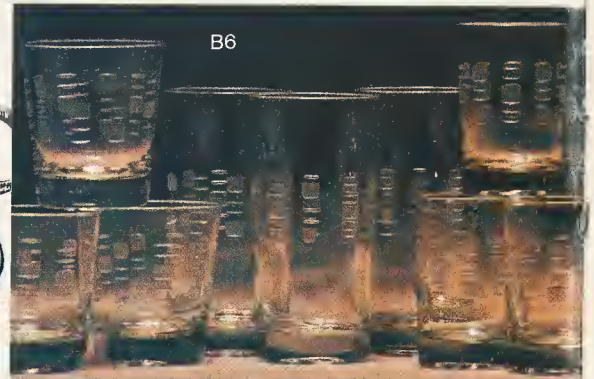
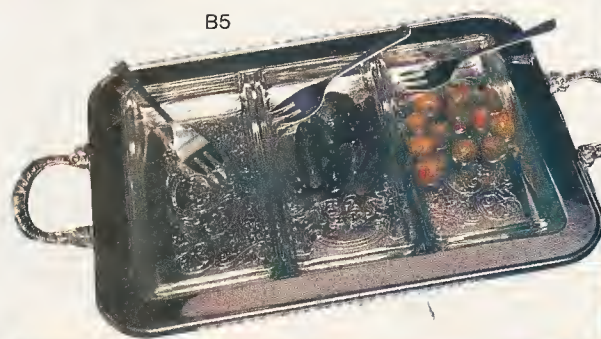
B2. "The Salem," 13" high, with votive candle, is our Hurricane of Pewter & wood with its own snuffer & clear glass top. 7.50. By Sutton.

B3. For a cooking treat, our 7-piece Stainless Steel cookware set with aluminum clad bottoms. By Farberware, of course. Set includes: 1 and 2 qt. covered saucepans; 6 qt. utility saucepot with cover; 8 1/2" fry pan. Everything cooks evenly, requires no special cleaners to maintain. 49.99 set.

B4. "Open Hearth" Broiler/Rotisserie by Farberware. Makes meats and poultry taste more delicious because it seals in natural juices. Heavy duty rotisserie motor for slow even turning. Smokeless & spatter-free. In easy-to-care-for stainless steel. 49.99.



Gifts to Show Off



B5. A 7-pc. relish tray in gleaming silverplate with etched glass liners and three forks. By Leonard Silver. 17.00.

B6. The complete home deserves our "Berkshire" beverage set by Javit Badash. 24-pieces include: 8 14 oz. beverage glasses, 8 9 oz. old fashioned glasses and 8 6 oz. juice glasses. In subtly patterned clear glass. 15.00 set.

Table drama in stunning 70-piece stainless steel flatware service for 8 by National Silver. Wood grained storage chest holds: 8 each dinner knives, dinner forks, salad forks, soup spoons, iced tea spoons, cocktail forks, 16 teaspoons and 1 each butter knife, sugar spoon, tablespoon, pierced tablespoon, cold meat fork, gravy ladle. 40.00 set. Choose **B7** "Antigua," a Mediterranean design, or **B8** "Chestertown," an Early American.





C1
C2

Small Showoffs

Sporting separates put together by Playmore in gay living color.

C1. Pow pullover with multi-hued weld stripes. Crew-neck styled in Acrilan® acrylic. Turquoise/Coral/Green. Sizes S, M, L(4-6X). 12.00. Sizes S, M, L(7 to 14). 14.00.

C2. Man-tailored long sleeved shirt of polyester interlock knit. Turquoise or Coral. Sizes S, M, L(4-6X). 8.00. Sizes S, M, L(7 to 14). 9.00.

C3. Brushed chino pant of polyester and cotton. With fly front, yoke back, belt loops and a penny pocket. Turquoise or Coral. Sizes 7 to 14. 12.00. Sizes 4 to 6X have a half boxer back. 10.00.

Three on a match from Stretchini.

C4. Heather tweeded Acrilan® acrylic pullover with windowpane garden embroidery blooming in front. Sizes S, M, L(7 to 14). Green or Navy. 12.00.

C5. Long sleeved man-tailored shirt in Light Green or Navy nylon. Sizes 4 to 6X. 7.00. Sizes 7 to 14. 8.00.

C6. Pant with wedgewood buckled self belt and zippered fly front. Woven texturized polyester in Light Green or Navy. Sizes 4 to 6X. 10.00. Sizes 7 to 14. 11.00.

C7. Paint Your Own T-Shirt by Just Accessories. Short sleeve white 100% cotton T-shirt, 7 color fast washable non-toxic crayons, complete instructions, personalized signature line. Individually boxed. Pre-screened outline for easy coloring. Sizes 4-14. 5.00.

C8. Leisure suit for the well-dressed lad joins a patchwork polyester denim CPO shirt-jac to matching pant. Esquire Jr., Ltd. adds a Navy acrylic long sleeved turtle-neck shirt to make it a threesome. Sizes 4 to 7. Blue only. 22.00.

Elegant set-ups for the little ones from Fawn Togs in easy-care blends and polyester. Navy/Red trim.

C9. Popover and slack of polyester and a polka dot accented shirt of polyester and cotton with a windmill applique. Infant sizes 12 to 24 mo. 14.00 set. Toddler girl sizes 2 to 4. 15.00. Not shown . . . Boys' set with a built-up polyester overall and windmill applique shirt. Infant sizes 12 to 24 mo. and Toddler Boy sizes 2 to 4. 12.00 set.

Warm wishes go with our patch printed coverups for the younger crowd. Pouf-quilted with Kodel® polyester fiberfill. "Fun to wear." Multi-printed polyester and cotton by Freitag.

C10. Hooded zip-front jacket. Infant boy or girl sizes. 9-12-18-24 mo. 8.00. Toddler 2 to 4. 9.00.

C11. Built-up overall with engineer hardware suspender closing. Infant sizes for boy or girl. 9-12-18-24 mo. 9.00. Toddler 2 to 4. 9.00. Not shown . . . Quilted jumper. For infant girls. Sizes 9-12-18-24 mo. 8.00. Toddler girl sizes 2 to 4. 9.00.



C4
C5



C8



C9



C7



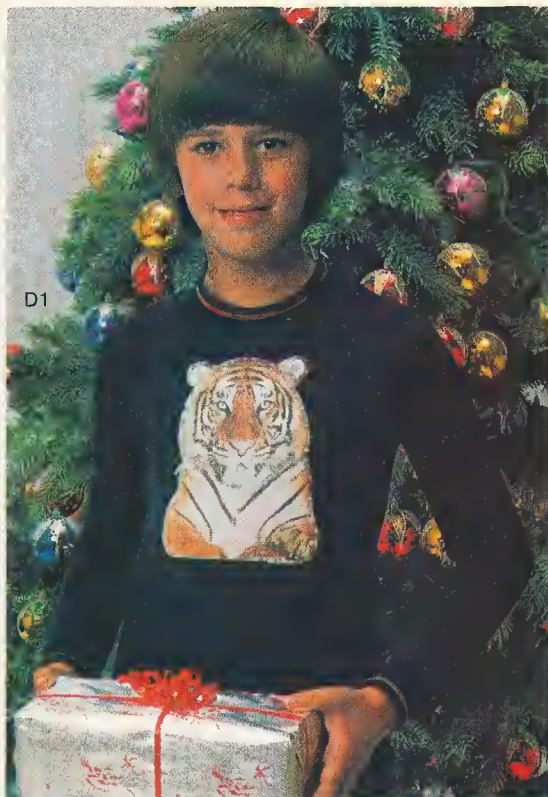
C10

C11

What Boys Want

D1. Collect our shirts with jazzy heat-transfer scenes in front. Of soft touch acrylic with multi-color stitching at neck and cuff. By Coral Industries. White, Navy, Camel, Yellow, Rust, Black, Red or Brown. Sizes S(8-10), M(12-14), L(16-18). 5.00.

D2. Sporting sweater has exciting screen-printed scene-making action fronts. By Coral Industries in acrylic with a tape neck. Dusty Blue, Camel, Bone, Peach, Rose or Maize. Sizes S, M, L, XL. 8.00.



D1



D2



D3



D4



D5

D6

D7

D3. Score a winning play with our knit ski pajamas of flame retardant Caprolan® nylon "guaranteed for one year's wear from Allied Chemical Co." Top has a screen printed football numeral on it. Both top and bottom have knit cuffs. Blue or Yellow. Sizes 8 to 18. By Sullcraft. 8.00.

D4. Plaid robe to wrap him up in is flame retardant cotton flannel with a shawl collar, two roomy pockets and a self sash. By Gold Label Robes. Red or Blue. Sizes S(8-10), M(12-14), L(16-18). Gift Boxed. 10.00.

Belts to go 'round in by Fabil. Sizes 20-22-24-26-28-30-32.

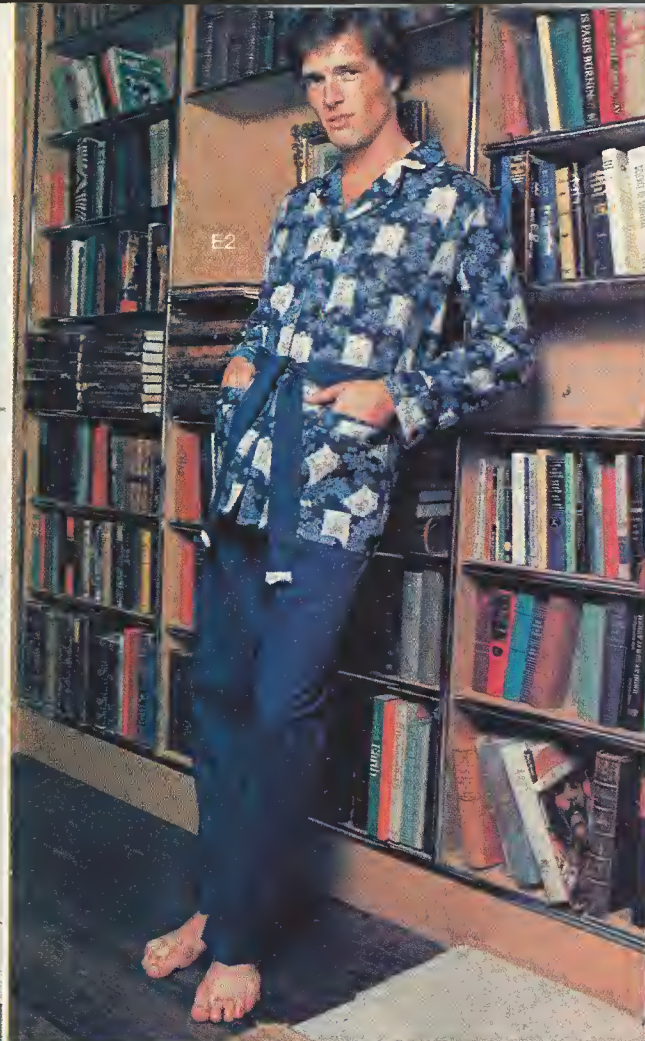
D5. Reversible dress belt with feather edge and gold tone buckle. Vinyl in Black/Brown or Bone/Navy. 4.00.

D6. Latigo leather 1½" wide in assorted florals and geometrics. Brown tones. 5.00.

D7. Hand colored floral patterned sportster with gold-toned buckle. 1½". Blue or Tan. 4.00.



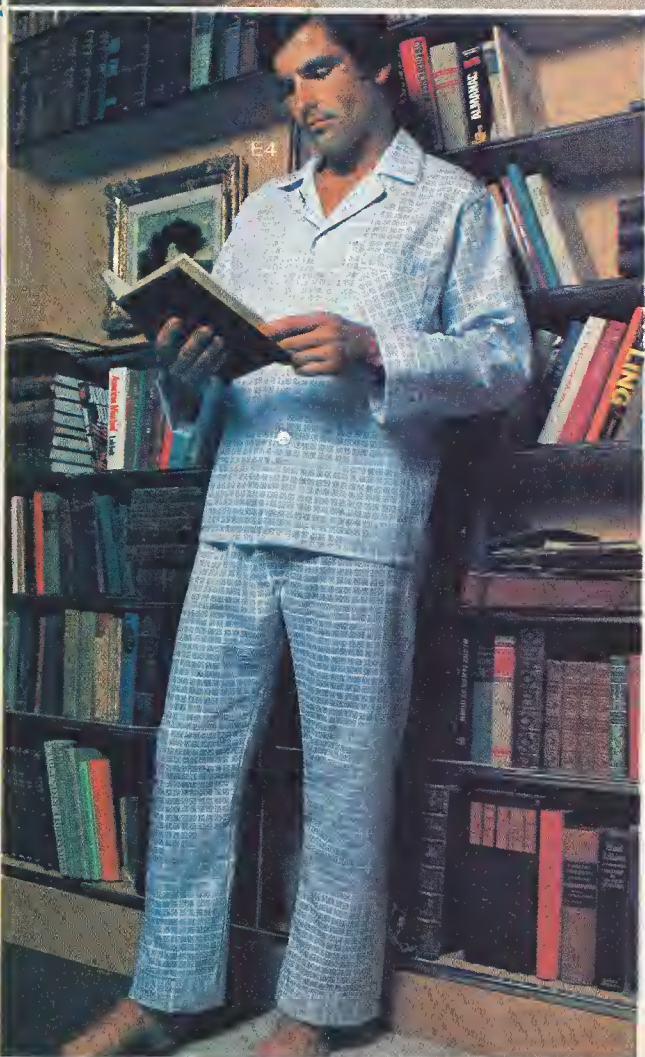
E1



E2



E3



E4

Make Him Comfortable

E1. Shave robe of luxurious machine washable cotton terry is equally at ease about the house or pool. By Diplomat. Royal, White or Burgundy. Sizes A, B, C, D. 15.00.

E2. That inscrutable Chinese charm in lounge pajamas from Diplomat. With wrap-sashed, twin pocketed top, solid pants. Machine washable Avril® rayon and polyester. Navy or Brown. Sizes A, B, C, D. 15.00.

E3. The kimono is the shape to be in this winter. Especially when it's plush velour of acetate and nylon. St. Moritz details it with two pockets and a self snap sash. Rust, Wine or Navy. One size fits all. 17.00.

E4. Check out these polyester and cotton coat styled pajamas by Lord Berkleigh. With full piping around the top. Permanent press finish to make him always look good. Blue, Tan or Melon. Sizes A, B, C, D. 12.00.

Puritan Because He's Tops!

F1. Heathered sweater shirt mixes solid color stripes in for contrast. With a 4-button placket front and full fashioned detailing. In machine wash & dry soft Orlon® acrylic. Oxford, Sand Heather or Spruce. Sizes S, M, L, XL. 19.00.

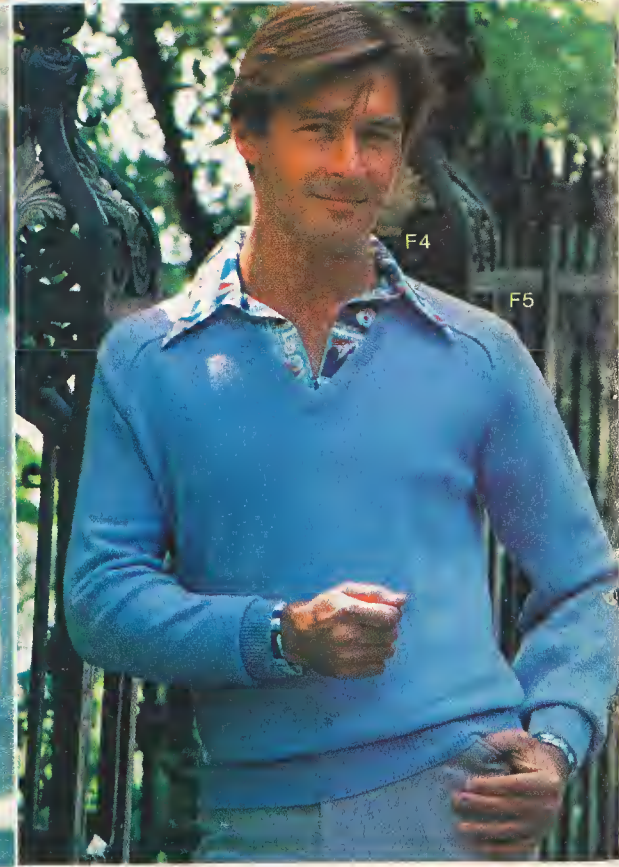
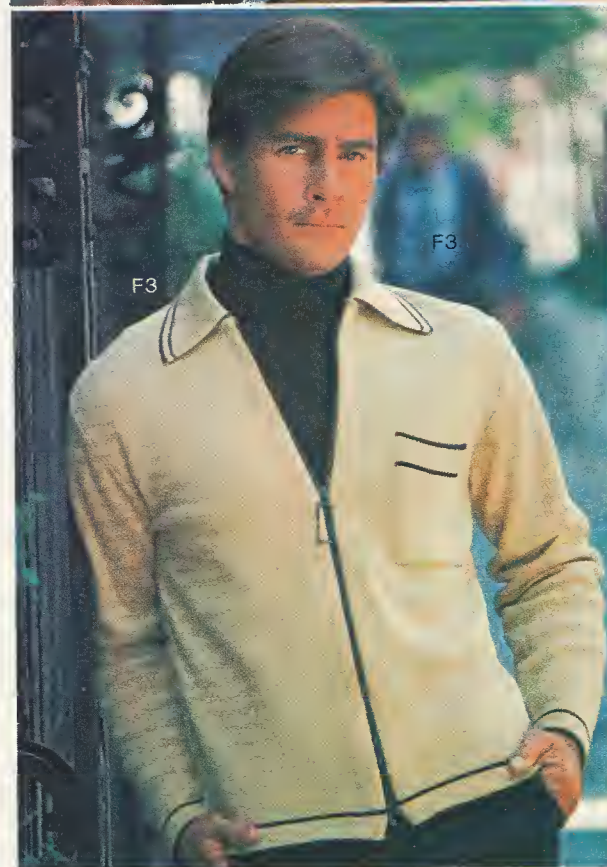
F2. Easy-going knit sport shirt has a 4-button placket front, flap chest pocket and neatly hemmed sleeve and bottom. In cotton and polyester. Carolina Blue, Copper, Sun or White. Sizes S, M, L, XL. 12.00.

F3. "Lanzip" long sleeve cardigan sweater with zip front, contrast stripe trim, fully washable Orlon® acrylic doubleknit. Camel, Navy, Cordovan. S, M, L, XL. 22.00.

F3a. "Brookton" long sleeve banlon® nylon turtleneck, full fashioned modified saddle shoulder, machine washable. Brown, White, Ecru, Navy. S, M, L, XL. 14.00.

F4. Handsomely printed sport shirt in acetate and nylon knit. Has long sleeves and long pointed leisure collar. Blue, Green or Brown. S, M, L, XL. 16.00.

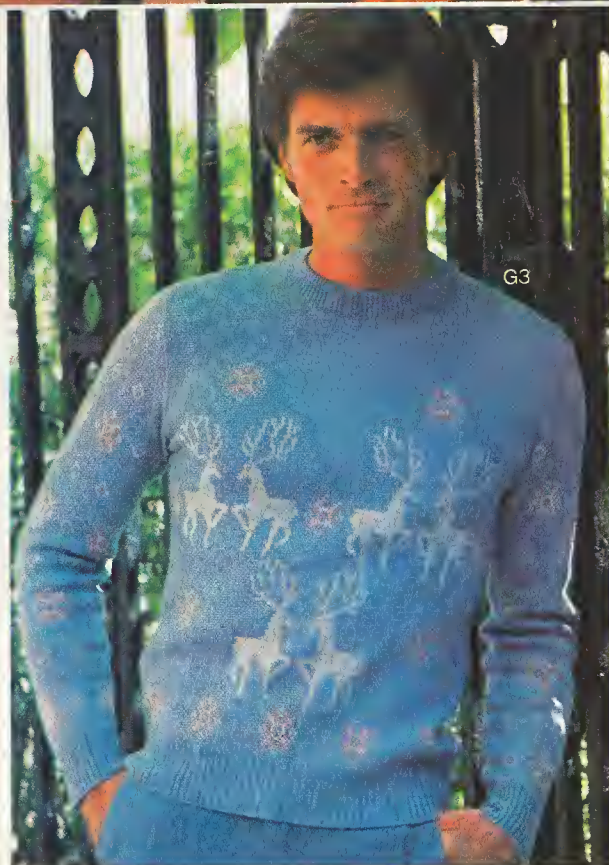
F5. Full-fashioned V-neck pullover in machine wash and dry virgin lambswool. With saddle shoulder detailing. Powder Blue, Beige or Fern. S, M, L, XL. 20.00.



Because He's A Good Sport

G1. Subtly striped and screen printed crew neck pullover of machine wash and dry Creslan[®] acrylic. By Forum Sportswear. Green, Blue or Sierra. Sizes S, M, L, XL. 20.00.

G2. Colorfully embroidered pullover has a special look in Trevira[®] polyester and cotton with an open "V" collar and lean, clean lines. By Forum. Tan, Ink Navy or Vanilla. Sizes S, M, L, XL. 18.00.



G3. Santa's reindeer and scattered snowflakes on a jacquard patterned crew neck sweater of Wintuk[®] knit Orlon[®] acrylic. Great for the winter scene from Forum Sportswear. Azure Blue, Vanilla or Ink Navy. Sizes S, M, L, XL. 20.00.

G4. Leisure suit for lighter moments is especially smart in texturized polyester knit with a new "cracked ice" fabrication. Fully constructed and carefully tailored by Aberdeen Sportswear. Jacket has 2 C.P.O. and 2 slash pockets and contrast stitched accents. Pants have an ivy flare. Dusty Blue or Camel. Sizes 38 to 46 regular. 45.00.





H1. Authentic Greek fisherman's cap is a jaunty gift imported from Greece by J.J. Seifter & Son. Well-constructed of 100% wool with nylon lining, sweatband and distinctive embroidered braid and cord on band and visor. He'll love it! Black. Sizes 6 7/8-7 1/2. 12.00.

H2. Supple long sleeved sport shirt of DuPont Qiana® nylon designed by William Atkin with his exclusive leisure collar, 2-button cuff and carefully matched colored buttons. Machine washable, too. Blue, Natural or Green. Sizes S, M, L, XL. 17.00.

H3. Picture him in a scenic printed knit sport shirt that's sure to catch his eye. By Oxford Shirtmakers. Assorted colors. And patterns. Sizes S, M, L, XL. 14.00.

Handkerchiefs he can always use. Gift boxed in sets of 3 by Imperial Handkerchief and Neckwear Co. White only.

H4. Classic initial in perma-press Dacron® polyester and cotton. All initials except I, O, U, Q, V, X, Y, Z. (Please specify.) 3 for 3.50.

H5. Large perma-press handkerchief in box with attached card. 3.50 set.

H6. Our scenic printed ties make the scene in bright-hued polyester. From Imperial Handkerchief & Neckwear Co. Assorted prints and colors. 6.50 ea.

H7. Handsome ties by Prince Consort feature the patented "Golden Clasp"® which is permanently fixed to tie loop lable. It clasps on shirts to keep the tie in place. Dacron® polyester in florals and conversational patterns. 5.00 ea. Woven fancy jacquards. 5.00 ea. Luxurious DuPont Qiana® nylon and imported polyesters. In scenic all-over motifs, woven club designs or fancy wovens. 6.50 ea.

The gloves he'll be glad to have. By Superb.

H8. Glove with acrylic blend cable knit back and vinyl palm. Thumb guard construction. Black or Camel. One size fits all. 5.00 pr.

H9. Leather glove with center vent and a warm Dacron® polyester and wool knit lining, Black & brown, sizes S, M, L, XL. 11.00 pr.



11

12



13

14



15

17

16



18

Separates Together

Relax pretty in our flower embroidered partners from Coming Thing. Of polyester/cotton calcutta cloth in Natural with multi-embroidery. Sizes 7 to 14.

11. Shirt jac with ric rac trim and an easy button-up front. 12.00.

12. Fly front pant with single button waist. 13.00.

Not shown: outfit for sizes 4 to 6X. In same flower embroidered calcutta cloth. But. Jacket is smock-shaped with puff sleeves. 9.00. Pants have a half boxer back. 8.00.

Set for saying hello to Santa. By Geisha Robes in a lace-bedecked stripe and flower trim print. Red or Blue.

13. Peter Pan collared robe cosily quilted with Kodol® polyester fiberfill. Sizes 4 to 6X. 13.00. Sizes 7 to 14. 16.00.

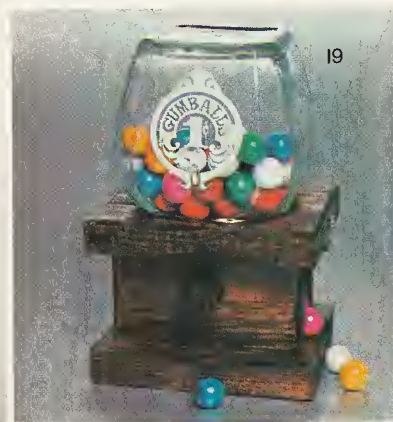
14. Ruffle-hemmed gown of flame-retardant cotton flannel has its own matching "Granny" cap. Sizes 4 to 14. 8.00. Not shown: pajama to match with its own "Granny" cap, too. 9.00.

Dude duds done up in denim and patchwork by Middledale.

15. Twin pocketed blazer of indigo-dyed pre-washed cotton denim. Navy. Sizes 4 to 6X. 14.00. Sizes 7 to 14. 15.00. Sizes 6 to 14. 16.00.

16. Bibbed jumper to match is bright with orange accents. Sizes 4 to 6X. 10.00. Sizes 7 to 14. 11.00. Sizes 6 to 14. 12.00.

17. Long sleeved patch printed gauze shirt. Multi shown. Sizes 4 to 6X. 7.00. Sizes 7 to 14. 8.00. Sizes 6 to 14. 9.00.



19

18. Victorian charmer for the young party-goers on your list. Adorable in a rosebud print with a self-ruffled floral lace pinafore and a removable apron that can double as a shawl. By Seibel & Stern. Beige-Rosebud print. Sizes 4 to 6X. 22.00. Sizes 7 to 14. 24.00.

Sweets for the bubble gum girls and guys. By Knock On Wood c/o Almark.

19. Medium size gum ball machine has a glass jar top and a dark natural wood base. No money needed to operate. 8.00. Also available in small & large sizes.

110. (Not shown) Attractive "Coke" glass refills available in small, medium and large sizes at 2.00, 2.50, and 3.00.

Hearts And Flowers

Ultra grown-up coordinates from Blue Bird Knit in Orlon® acrylic.

J1. The pretend sweater set is actually one pullover with the look of a pair. Gaily edged with Tyrolean jacquard trim. White/Red or White/Navy. Sizes 2 to 4. 8.00. Sizes S, M, L(4 to 6X). 10.00.

J2. Pull-on pant with elastic waist. Red or Navy. Sizes 2 to 4. 7.00. Sizes S, M, L(4 to 6X). 8.00.

J3. She'll love our Love Signature Shirdress in machine washable Fortrel® polyester knit. By Joseph Love, of course. Red or Blue. Sizes 4 to 6X. 13.00. Sizes 7 to 14. 15.00.

*Reg. T.M. Fiber Industries Inc.





K1



K2

K3

K4



K5

K10

K6

K8

K7

K9



K11



K12



K13



K15

K16

K14



K17

K18

K1. "Steamstress" lightweight steam iron for home or travel. The ideal gift for the home sewer. With its special seam & dart pressing talents. Removes wrinkles from any fabric. Never scorches. By Osrow. 12.95.

Entertaining idea from Schmid Bros. Serving Pieces in yellow ceramic fishnet pattern. The perfect gift for the holiday hostess or for yourself. **K2.** Coffee pot to complete things. 7.50. **K3.** Set of four plates to match. 12.50. **K4.** Set of four cups and saucers. 15.00.

Ceramic pots for your favorite plants or flowers. Complete with matching saucers. By Import Associates. Cylinder shaped white pots with hand painted cobalt blue design.

K5. 4" pot 6.00 eac. **K6.** 5" pot 8.00 ea. **K7.** 6" pot 9.00. Dark amber, bowl shaped, crimped edge pots with nostalgic decorations.

K8. 4" size. 6.00. **K9.** 5" size 8.00 ea. **K10.** 6" size 9.00 ea. Naturally nice serving accessories in beautifully grained wood. From Lipper International. **K11.** 7 Pc.

Teak salad set includes large salad bowl, 4 individual serving bowls and 2 servers. 20.00.

K12. The beauty of solid pine in our fully transistorized cordless electronic wall clock. Octagonal shaped—13 3/4" high—13 3/4" wide. By Bulova. 36.00.

K13. Monday Pod 12" lazy susan for snacks. 13.00. Lipper International.

Luggage set to go from the "Savage" series by Maximilian. Soft-sided elegant leather look vinyl with aluminum frames and recessed locks. In smart beige. **K14.** 24" pullman. 41.00. **K15.** 22" carry-on. 33.00. **K16.** Shoulder tote. 27.00.

K17. Musical mini-bureau in walnut with gold trim. Triple drawers have brass handles and fabric lining. 18.00. By M.I.M. LADOR.

K18. Music boxes. A charming gift idea to hold your jewels. Quaint little folk pictured atop a wooden music box by M.I.M. LADOR. 11.00.



L1



L2



L3



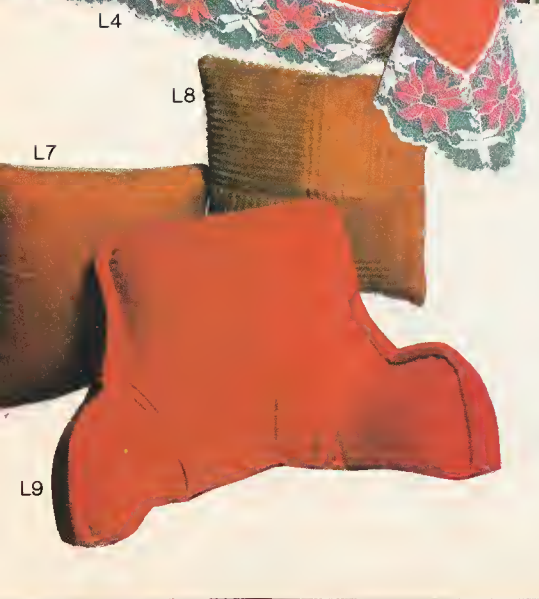
L4



L5



L6



L8

L7

L1. Frothy schiffli embroidered eyelet ensemble. "Pilgrim", polyester and cotton, machine washable and permanent press. In bone by Acme Quilting. Quilted coverlet with a 10" eyelet ruffle is puffed with bonded polyester and backed with nylon tricot. Twin—25.00. Full—28.00. Matching eyelet dust ruffle with seamless platform top. Twin—17.00. Full—19.00. Eyelet ruffled quilted pillow sham—10.00.

L2. Fairy tale inspired ensemble in a multi-colored nose gay floral on a beige ground. "Cinderella" polyester/rayon with a nylon tricot back. The quilt top, double ruffle flounce is machine washable and dryable. By Wilshire. Twin—27.00. Full—32.00. Ruffle/pillow sham—7.00 ea.

L3. "Living Rose", printed comforter of DuPont Dacron® polyester percale covered. It reverses to a solid color. By Barclay in Yellow, Pink or Blue. Sizes 72 x 90. 20.00. Size 80 x 90. 25.00.

L4. "Festive Charm". Solid polyester & cotton with lace edge. Soil release, permanent press finish. Red, Green, White, Ecru. 52 x 70 obl. 9.00. 67 x 90 obl. 13.00. 67 x 90 oval. 13.00. 67 x 104 obl. 16.00. 67" round. 12.00. Napkins to match. .90 ea. By Lintex, Inc.

L5. "Norsk", a Scandinavian inspired cloth. By Bardwil, in fancy woven acrylic tone on Tone dobby check. Washable, soil release and permanent press. Brown, Gold or Green on Bone ground. Size 52 x 70 obl. 12.00. 60 x 85 obl. 17.00. 68" round, fringed. 19.00. Napkins 1.40 ea.

L6. "Courtrai", Courtauld's Fibro® rayon tablecloth with soil release, permanent press finish with Satin bands and an intricate weave. By J.C. Sleater. Red, Moss, White, Bone or Gold. 52 x 70 obl. 10.00. 60 x 90 obl. 14.50. 60 x 90 oval. 15.00. 60 x 104 obl. 17.00. 68" round, fringed. 15.50. Napkins, 1.30 ea.

L7. Closely woven chenille square with look of crushed velvet. Size 18 x 18. Beige, Copper, Gold, Olive. 5.50 ea.

L8. Patch topped square in hi-lo wale corduroy. Size 18 x 18. Gold, Brown, Lime or Red. 5.50.

L9. Bed Rest is wide wale corduroy with single jumbo cord welting. Red, Gold or Olive. 12.00.

L9

Special Gifts Under \$20

- 13A.** The Highway Emergency Kit is the auto aid to own. Contains: finger tip action fire extinguisher; tire inflator and sealant; copper coated steel battery booster cable; gasoline syphon pump; safety vest; car spotlight; first aid book. All in a saddle stitched luggage type carrying case. From Dynamic Classics. 18.00.
- 13B.** Electro Multi-Poker for that Gambling instinct in us all. A great all-family idea, it plays draw and stud poker and 21. Batteries not included. (2 'C' cells needed) By Astra Trading. 10.00.

13C. Flower cart holds 5 pots, each with different bouquets. 9.00.

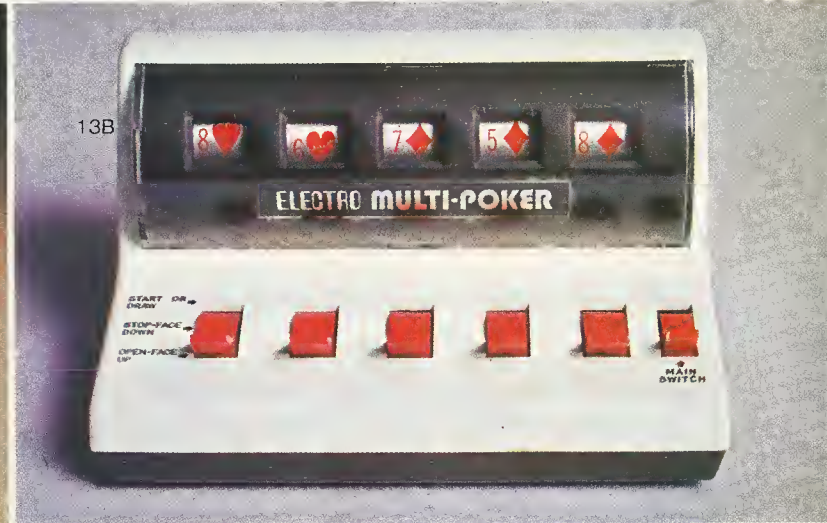
13D. Cafe scene holds a clear plastic pot for you to fill. 4.00.

13E. Set of four satin hangers for her very best. Daintily scented, richly padded. With plastic covered hooks for longer wear. By Scent Station in Cerise, Gold, Turquoise, or Avocado. 4.50 set.

13F. Adorable Ladybug Antimony box makes sure that little jewels and trinkets don't fly away. By William Rand in Gold with Black or Red dots, all Silver with a soft velvet lining. 6.00.



13A

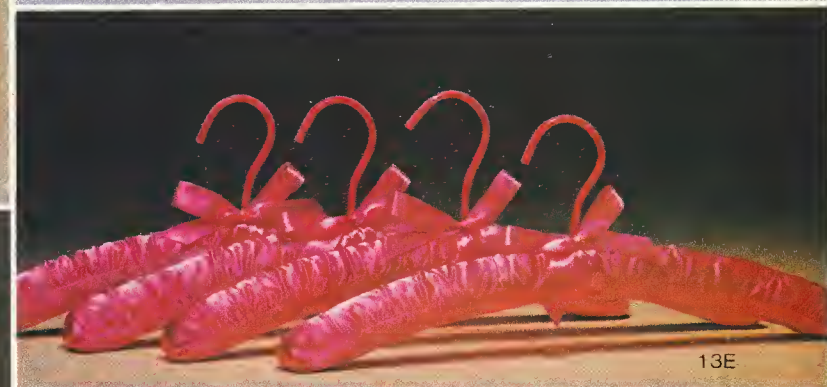


13B



13C

13D



13E



13F



14A. Brilliant "aztec" accented big top pullover is easy-going and easy-on-the-eyes in space dyed acrylic. From R.B.K. Imports. Brown or Blue. Sizes S, M, L. 18.00.

Pandora ensembles this threesome for dramatic effect. And it plays so well!

14B. "Serape" in Inca-inspired acrylic knit. With tie sides. Blue/Natural/Orange. Sizes SM-ML. 16.00.

14C. Turtleneck pullover with long turn-back cuffed sleeves. Acrylic knit in Denim Blue. Sizes S, M, L. 13.00.

14D. Basic pant in brushed denim. Blue. Sizes 5 to 13. 16.00.

Prettied-up pair by Pandora in a divine Dusty Rose.

14E. Peasant top in a nifty flat stitched acrylic knit has a cinched peplum waist and lace insert trim. Sizes S, M, L. 18.00.

14F. Basic pant in texturized polyester. Sizes 5 to 13. 18.00.



Going Together

15A. The pantcoat is a sensation in wanted denim with a cozy Sherpa collar and lining. By Fawn Grove. In a hip-length that goes with pants or skirt. Navy. Sizes 5 to 15. 40.00.

15B. Super shirt in richly textured striped cotton gauze with natural muslin collar, cuffs and side darts. Nirvana details it with a pocket and placket front. Green/Nutmeg or Blue/Pink Sizes S, M, L. 16.00.



15A



15B

15D

15C

15E

15C. The belt make it big on pants of cotton pinwale corduroy. Smart Parts designs it in elasticized corduroy with a wood toggle buckle. And it's fine with the pants or around the waist of a coordinating top. Sage Green or Nutmeg. Sizes 5 to 13. Belted pant. 18.00.

15D. Easy goes the big blouse with new shirred shoulders and a hemp rope belt. By Joy-See in polished polyester and cotton. Red or Blue. Sizes S, M, L. 13.00.

15E. Sleek pant of texturized polyester gabardine. With a tri-colored belt and welt seaming on front leg. By Apple Pie. Sizes 5 to 15. Beige or Grey. 16.00.



16B

16A



16C

16D



16E

16F

Savvy Separates

16A. The shirt plus scarf is what's new. Ours is Western styled polyester and rayon with a quilted print yoke and cuff and a matching print scarf for neck or head. Blue or Green. Sizes 5 to 13. By Langtry. 15.00.

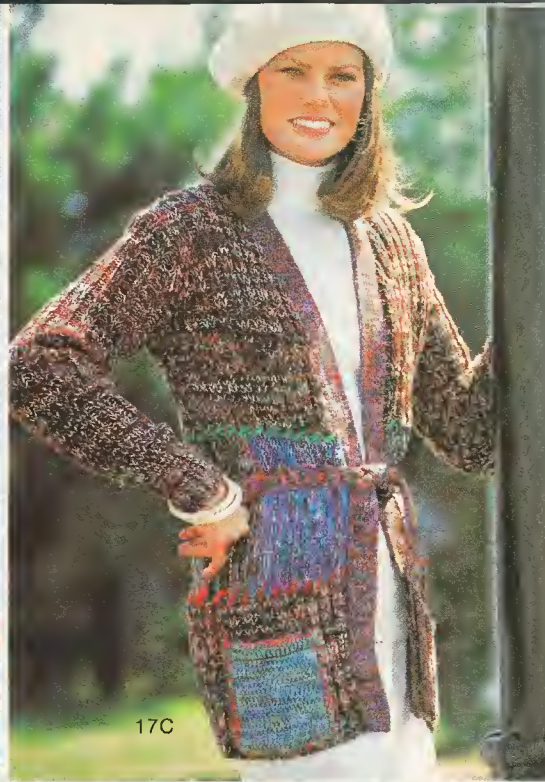
16B. Pre-washed denim jean with double cargo pocket, contrast stitched trim and belt loops a-plenty. By What's In A Name. Sizes 5 to 13. Navy only. 20.00.

16C. Gauze top for all seasons has faggoting detailing and yoke inserts of elephant patterned lace. By Sitasons in Blue or Beige cotton. Sizes S, M, L. 14.00.

16D. Attractively colored tweed pant of polyester and Avril® rayon with an especially nice belt to polish things off. By Smart Parts. Sizes 5 to 13. Blue or Brown. 18.00.

16E. Today's pant suit is ultra-fashionable with a cuffed cap-sleeved easy jac and lean pants. Jacket also sports cuffed side patch pockets and a yoked back. In Chocolate Brown or Sea Foam. Sizes 5 to 13. Time and Place. 40.00.

16F. Striped tee shirt with a dropped crew neck and merrow stitched trim. By The Right Time in fine line cotton knit. Mocha, Dark Green or Blue. Sizes S, M, L. 11.00.



Smash Sweaters

17A. Color-bordered sweater in space-dyed ombre striped Wintuk® yarns of DuPont Orlon® acrylic. Bananas styles this pullover with a turtleneck. Sizes S, M, L. 18.00.



17B. The twin set is the pair to be seen with. This by R.B.K. Imports in space dyed striped Brite Acrylic. A twin pocketed wrap cardigan with a sleeveless U-neck shell. Navy or Black. Sizes S, M, L. 24.00 set.

17C. Hooray for the hobo cardigan in multi-color tweeded acrylic. With contrasting twin pockets and a back that's worth turning around for. By Elliot International. Multi shown. Sizes S, M, L. 16.00

17D. Patchworked big top with plenty of pizzazz. Pronto does it in a marvelous free-form design in button-trimmed acrylic. Sizes S, M, L. 22.00.

17E. Dramatic boucle big top pullover with that new squared neckline, zipper back and soft self tie. By Robby Kent in Wintuk® /Rayon. Space dyed Copen Blue or Raspberry. Sizes S, M, L. 24.00.

17F. Mitred stripes make the difference on a smart pullover of tri-colored acrylic. Grand on its own or with a blouse underneath. By Miss Gotham. Blue or Rust. Sizes S, M, L. 14.00.



18A

18B

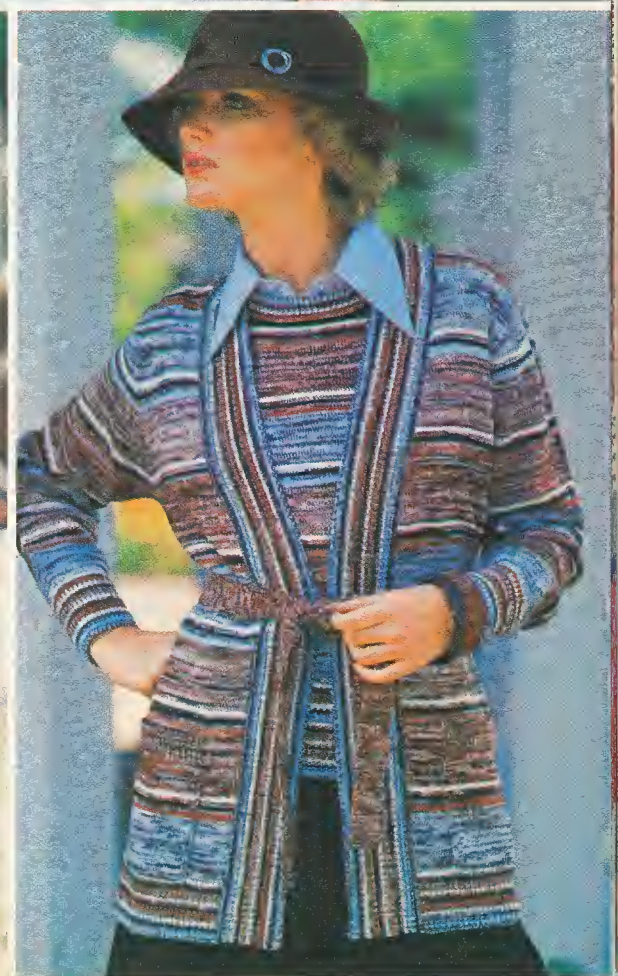
18A. Roar approval for the tiger embroidered skivvy pullover with stripes to control things. By Cyn Les in acrylic. Black only. Sizes S, M, L. 21.00.

18B. Handsome is our knobby tweeded fisherman stitched cardigan with convertible collar, twin cuffed patch pockets and wool grain buttons. Robby Kent's creation in Wintuk® Orlon®. Black/White or Brown/White. Sizes S, M, L. 26.00.

18C. Scarf-tied and stunning, our striped big top pullover with shoulder epaulets and that fringed scarf to toss as you please. Of space striped Brite Acrylic. From R.B.K. Imports. Blue or Green. Sizes S, M, L. 16.00.



18C





19A. Cheers for the cardigan in criss-cross stitched space dyed DuPont Orlon® acrylic. With a V-neckline, twin patch pockets and colorful good looks. By Highpoint. Blue or Green mix. Sizes S, M, L. 20.00.

Lady Manhattan layers it on with stunning effect. For sizes 8 to 16.

19B. Lovely shirt in nylon sheer "de chine" has a band neckline and self sash. Black/multi print. 20.00.

19C. Cowl necked, long sleeved pullover in Celanese Fortrel® polyester interlock completes the look. Silver grey. 16.00.

19D. Dressed-up sweatering in poin-telle stitched DuPont Brite Orlon® acrylic. With a seductive jewel neckline, balloon sleeves and an adjustable pull-thru tie waist. By Highpoint. Winter White or Black Magic. Sizes S, M, L. 16.00.



19A



19B
19C



19D

This year's handsomest pant outfit stars weskit, blazer and a Chinese-silk look blouse. All the great looks for now put together by Emotions for Sports Femme. Sizes 8 to 18.

20A. 1-button jacket with twin welt seam flap pockets. Polyester sheen gabardine. Black only. 40.00.

20B. Weskit to match. 25.00.

20C. Fly-front pant with extended tab waist. To match. 22.00.

20D. Long sleeved flip-tied blouse with the look of Chinese jacquard silk. Washes so well. Pale Silver. 25.00.

Blazer and skirt, put together for late day by Prestige. The elegant classic approach that is Winter '76. Sizes 8 to 18.

20E. Fully lined Compton Velveteen blazer with twin patch pockets. Black only. 55.00.

20F. Tartan plaid 4-gore skirt in a wool blend. Red Stuart only. 26.00.

20G. The smartest shirt is a clever mix of graduated stripes with a separate checked scarf to tie as you please. By Lady Arrow in Klopman's Ultressa® woven texturized 100% Dacron® polyester. Black/White. Sizes 8 to 18. 20.00.

20H. Standout shirt with a separate long fringed scarf to tie softly and wing cuffs. By Lady Arrow in polyester "Revoree® Crepe." White or Black. Sizes 10 to 18. 21.00.

20J. Tee shaped jewel neck blouse has a separate triangular fringed scarf to toss around. Roda Lee details it with a zippered back in Alluressa® polyester knit. White or Black. Sizes 10 to 18. 14.00.



20K. Beaded beauty mixes cut and caviar design to great effect. Pouch is on a brushed gilt frame with convertible handle. By Walborg. Bronze, Alabaster, Black, Gold or Silver. 10.00.

20L. Brilliant evening companion. Our softly shirred pouch with bejeweled bow lift lock and adjustable swinger chain. By Harry Levine. Gold or Silver jersey or Black peau de soie. 13.00.

Casual Approach



21A

21C

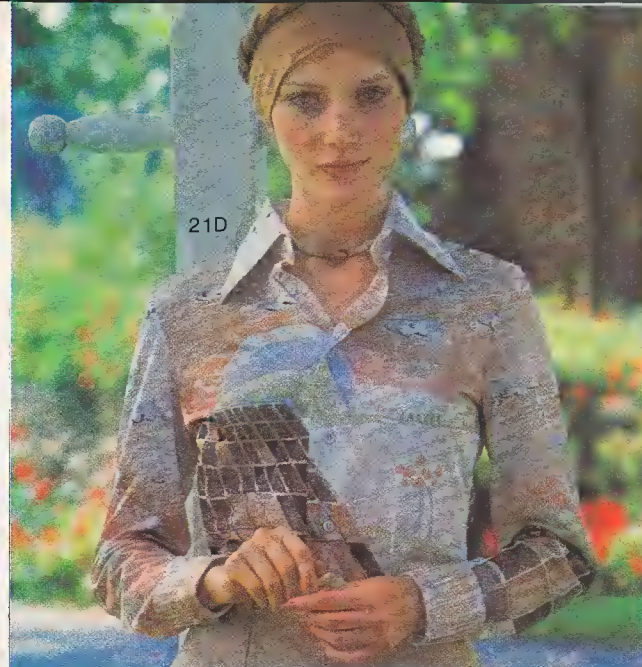
This trio sings out with color harmony in a soft and subtle way. By Susan Scott.

21A. Tri-toned intarsia front crew neck pullover. Orlon® brite acrylic in Brown/Clay/Silver. Sizes S, M, L. 22.00.

21B. Long sleeved shirt with a detachable reversible tonal scarf in Dacron® polyester knit. Sizes 8 to 18. Clay. 17.00.

21C. Easy pant with fly front, watch pocket and elastic back in Dacron® polyester knit. Sizes 8 to 18. Clay. 20.00.

21D. The "Piazza" print is the thing about our beautifully shaded shirt of Enkalure® nylon knit. By "Little Augie" for Buddy Meyers. Peach/Beige/Brown comb. or Blue/Black/Pink. Sizes S, M, L. 18.00.



21D



21E

21F

21G

Pair to go places from Mardi Modes. Sizes 10 to 18.

21E. Multi-swirl printed overshirt in sheer nylon. Brown/Apricot. 17.00.

21F. Short sleeved tee shirt completes it in interlock knit polyester Apricot. 11.00.

21G. Softened shirt is a classic in Qiana® nylon knit. Beautifully colored in Apricot, Bone or Silver Grey. Sizes 8 to 18. By Gailord. 17.00.



22A

22A. Hooded storm coat is a great cold-day coverup. In bonded Oxford with a pile lining and turn buckle closing. By Fitz Rainwear in Terra Cotta, or Walnut. Sizes 6 to 16. 52.00.

22B. Pile-high storm coat in a 34" pant length. With Pile trimmed collar, cuffs and lining and a cozy feeling. By Fitz Rainwear in bonded Oxford. Terra Cotta & Bone. Sizes 8 to 18. 48.00.



22B



22C

22C. Make-believe mink styled as carefully as the real thing with pretend leather inserts and sash belt. And side buckle trim. 32" length. By Bobbi Ellen. Tourmaline, Ranch or Cerulean. Sizes 8 to 18. 80.00.



22D

22D. Cheers for the chubby jacket in lovely rabbit plate. Dendri tailors it with a Peter Pan collar, warm hook and eye closing. 25" length. Assorted colors and patterns. Sizes S, M, L. 75.00.



22E

22E. Pleated pant coat in P.V.C. leather-look-alike. Adorable tailors it with a shoulder yoke, pleated front and back and slit breast pockets. Sizes 8 to 18. Bone or Chamois. 32.00.

Accent on Accessories

23A. Double-action self-opener umbrella in colors that make a rainy day bright. By W. I. Umbrella in nylon with a matching case and mock tortoise shell crook handle. Kelly, Red, Navy, Brown or Beige. 9.00.



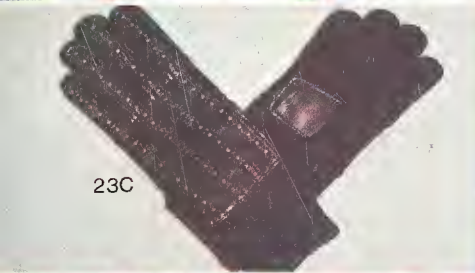
23A

23B. The most terrific toe sock has an applied Pigtail Patty face with yarn hair, as well as multicolor stripes and toes. By Finale Glove in acrylic. Black, Beige, Navy, Red, Green or Brown. One size fits all. 5.00 pr. Also available in a wide range of attractive multi-color multi-pattern acrylic toe socks by Finale Glove. One size fits all. 4.00 pr.



23B

23C. The amazing "Isotoner" driving glove by Aris with Iso-Massage® action to massage as it's worn. Of Antron® nylon and Lycra® spandex with leather strips for looks and firmer grip. Brown/Camel, Suntan/Brown, Black/Mink, Black/Self or Camel/Self. One size fits all. 14.00 pr.



23C

23D. The glove to love by Fownes is a "2 in 1" wonder made in kinkid with matching removable Orion® acrylic liner and contrast-color striped cuff. Black/grey stripe, Brown/rust stripe, Camel/green stripe, Navy/Burgundy stripe, Burgundy/Bone stripe or Mink/Camel stripe. Sizes A and B. 7.00 pr.



23D

Stunning purse accessories by Princess Gardner in "Reflection!", a corduroy patterned deeply embossed soft balmoral leather with golden highlights.

23F. "Stasher" checkbook secretary with framed outside change purse. 16.00.

23G. "Tri-Partite" French purse. 7.50.

23H. Key Gard has 6 hooks and a button closing. 4.00.

From Buxton's "Tender Clutch" collection, soft frameless wonders in soft leathers—fashion-bright array of frameless mix and match colors.

23J. Soft Clutch. Has compartment for checkbook, flap pocket for bills, coin purse, center zippered twin pockets for essentials. And more! 10.00.

23L. Touch 'n Go Cosmetic Case. Organizes via two protective zippered pockets. And linings are washable and waterproof. 6.50

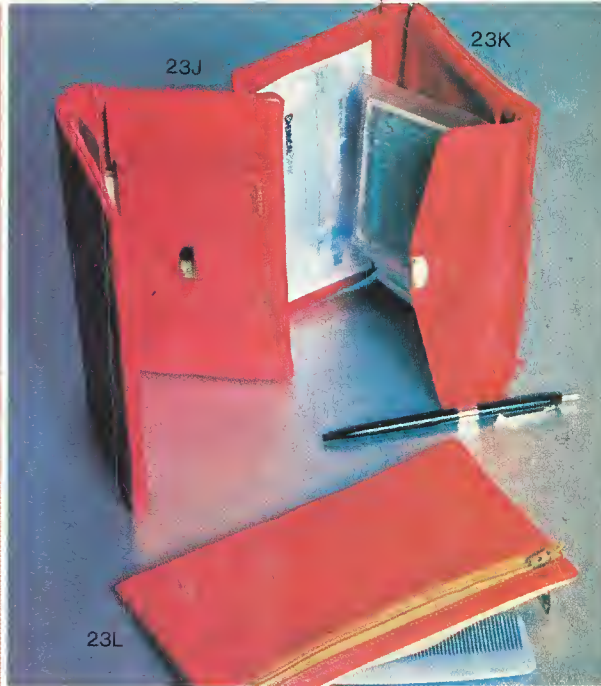
23K. Such-A-Clutch. With outside bill pocket, flap-secured photo and credit card section, replaceable window book, ball point pen and holder and a place for your checkbook. Wow! 11.50.



23F

23G

23H



23J

23K

23L



23E

23E. That great Aris styling in an acrylic knit shortie glove with turnover cuff and full perforated "Novakid" back and patch palm. Brown/Camel, Black/Mink, Camel/Bone, or Navy/Red. One size fits all. 6.00.

ORDER BLANK

ITEM NO	QUANT.	DESCRIPTION	SIZE	1st CHOICE	2nd CHOICE	PRICE

Please charge to: Acct. No. _____

Name _____

Address _____

City _____ State _____ Zip _____

TOTAL _____

May we substitute a similar item or color? Yes No
 Charge Check Money Order

McCulloch's

Salem, Ohio

332-4637

Please add 4% Ohio sales tax
If undelivered, please destroy

BULK RATE
U.S. POSTAGE
PAID

Permit # 80
Salem, Ohio



24A. Devri does a handsome split cowhide jacket. Notch collar, 6-buttoned front and set-in belt. Sizes 8 to 18 1/2 to 17 in Brown Copper or Green. 55.00.

24B. Split cowhide jacket as great as all outdoors. With a triple tab closing and tabbed pocket. And a lavish lamb collar. Sheep-mates quilt-lines it for wintry days. Rust and Chamois. Sizes 5 to 15, and 6 to 16. 90.00.

IRS

94.31.42.G